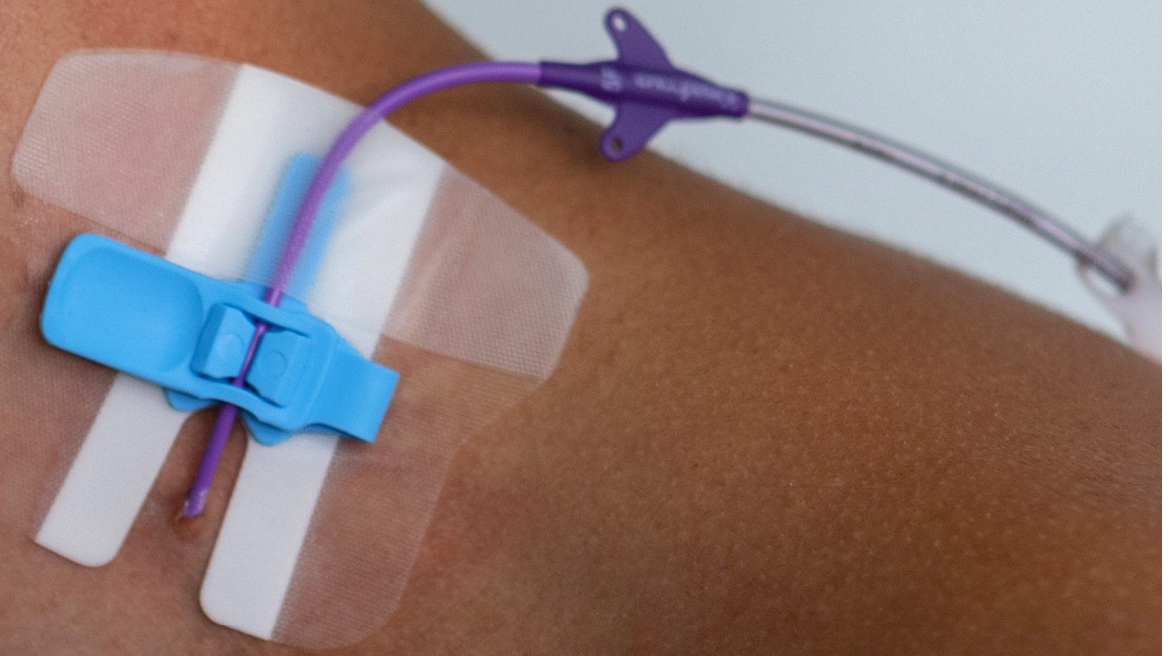


bedal flex

The answer to known issues with SUTURES:

- ✓ Minimizes complications associated with suturing
- ✓ Improves patient comfort and safety
- ✓ No more needle stick injuries by care givers



-
- ✓ Strong
 - ✓ Comfortable

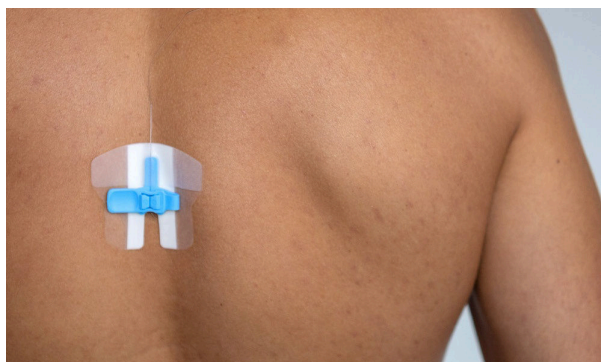
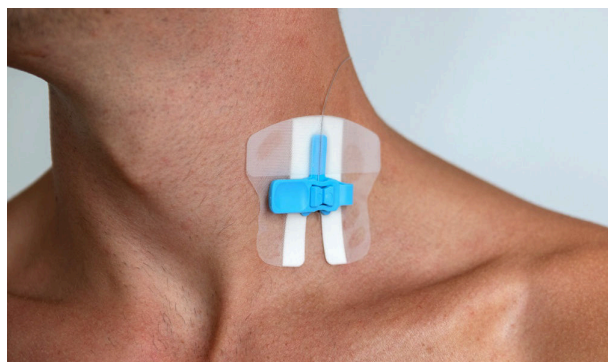
- ✓ Easy to use
 - ✓ Versatile
-

bedal flex

Suitable for stabilizing & fixating a large range of catheters, such as:

Plexus & epidural catheters, spinal neuro modulation electrodes (pain management), harpoons (breast cancer), CVC & midlines.

-
- ✓ **Reducing risk of catheter dislodgement (migration, pull out)**
 - High fixation strength
-
- ✓ **Reducing infection risk**
 - Absence of catheter-pistoning (micro motions)
 - Absence of any glue to fixate catheter onto device, which reduces dirt build-up
 - Tape material is non-absorbent and resistant to excess fluids
-
- ✓ **Easy & time-saving replacements**
 - Easy & safe separating of PU dressing from **bedal flex**, due to 'non-stick' plastics & textured surface of tape
-
- ✓ **Easy catheter cleaning**
 - Absence of any glue to fixate catheter onto device; no glue residue on catheter
-
- ✓ **Optimal patient comfort**
 - Tape is skin friendly (hypoallergenic), highly breathable with foam tape providing cushioning effect on skin
 - Ultra-low profile
 - Use of soft materials only
-
- ✓ **Easy to use**
 - Simple functioning of the device; opening & closing of the leash
 - Catheter re-positioning possible by re-opening & closing the leash
 - Easy handling & placement of device while wearing gloves
-



Ordering information

Product number	Description	Size range	Qty
EP02	bedal flex, size XS	2.7-5 Fr / 20-16 G	50 pcs / box

Find out more on www.bedal.be